

INSTALLATION INSTRUCTIONS FOR MIRROR

www.andres.glass



AVOID COLLISIONS OF THE CORNERS OF GLASS AND MIRROR PRODUCTS WITH HARD OBJECTS AND SURFACES SUCH AS CONCRETE, CERAMIC TILES, ETC.

Andres Glass Solutions OÜ recommends using the help or service of a specialist in the field when installing the products.

Before installing or using the product, read the installation, use, maintenance, and warranty instructions.

MIRROR WITH MOUNTING PLATE

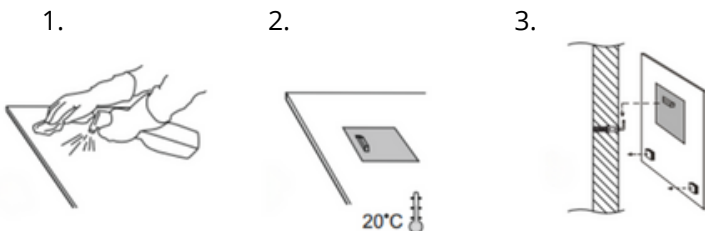
We remind you that the default kit includes a mounting plate, hook, and dowels. When buying a wall adhesive mirror, we recommend first consulting a sales representative, who, if necessary, will add suitable glue and tape to the offer for an additional fee.

Work instructions

- Make sure that the temperature of both the installation environment and the mirror storage environment is at least 20 °C.
- Before installation, make sure that the surfaces are dry, clean, and free of dust and grease.
- Avoid installing mirrors on wet or damp surfaces.
- The dowels included with the mirror are designed for stone walls and are not suitable for plasterboard. For plasterboard, we recommend using, for example, an Alligator 6mm dowel.

INSTALLATION:

1. Place the mirror face down on a flat surface, avoiding scratches.
2. Clean the back of the mirror with a silicone-free glass cleaner. (Figure 1)
3. Remove the protective film from the mounting plate and place it on the upper back side of the mirror. (Figure 2)
4. Press firmly on the mounting plate for at least 10 seconds, and then allow the mounting plate to adhere to the mirror for 30 minutes. Then, press firmly on the mounting plate again for at least 10 seconds.
5. Drill a hole in the wall for the dowel, taking into account the location of the mounting plate. Then install the dowel in the wall and screw the L-hook included in the mirror kit into it.
6. Remove the protective films from the mounting pads included in the mirror kit.
7. Hang the mirror with the mounting plate on the L-hook mounted on the wall and push the mirror to the wall with the mounting pads. (Figure 3)



WALL ADHESIVE MIRROR

When installing your own mirrors, Andres Glass Solutions recommends using Mirrocol elastic glue, which is specially developed for gluing mirrors and does not contain solvents or isocyanates.

Mirroco has a special glue that can be used for the following purposes

- For mounting mirrors in bathrooms, on brick or plastered walls and doors.
- For concrete or plaster walls (except for safety mirrors) and metal structures. For safety mirrors, consult the mirror manufacturer.
- For inclined walls.
- It is also suitable for gluing slats and panels made of different materials.

INSTALLATION:

1. Place the mirror face down on a flat surface, avoiding scratches.
2. Clean the back of the mirror with a silicone-free glass cleaner.
3. Apply Mirrocol with a hand or air gun in vertical lines of glue, avoiding horizontal stripes or dots.
4. Use a special mouthpiece with a V-shaped cut.
5. The distance between the vertical glue lines must not exceed 20 cm.
6. Depending on the size of the mirror, add the recommended tape between the vertical glue lines to ensure the mirror is firmly attached to the wall.
7. Install the mirror within 10 minutes. For a thicker mirror, add support for a few hours.
8. Fix the mirror mechanically on inclined walls.
9. Remove any uncured glue residue.

Andres Glass Solutions is not responsible if the installation instructions are not followed or if other glue is used that is not mentioned in this manual.



INSTRUCTIONS FOR THE USE AND MAINTENANCE OF MIRRORS

- Use a soft microfiber cloth or a soft cloth to clean the mirror. Avoid rough or scratchy materials that may damage the surface of the mirror.
- Use a special glass cleaner to remove dust, stains, and grease from the surface of the mirror. Do not use aggressive chemicals that can damage the surface of the mirror.
- Clean the surface of the mirror gently in a circular motion to avoid scratches or streaks.
- Regular and gentle cleaning helps maintain the mirror's cleanliness and shine and extends its service life.