



## AVOID COLLISIONS OF THE CORNERS OF GLASS AND MIRROR PRODUCTS WITH HARD OBJECTS AND SURFACES SUCH AS CONCRETE, CERAMIC TILES, ETC.

Andres Glass Solutions OÜ recommends using the help or service of a specialist in the field when installing the products.

Before installing or using the product, read the installation, use, maintenance, and warranty instructions.

### Work instructions:

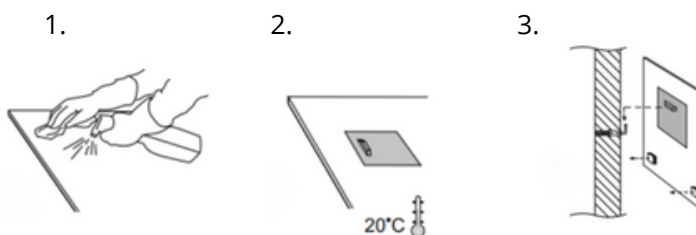
- Make sure that the temperature of both the installation environment and the mirror storage environment is at least 20 °C.
- Before installation, make sure that the surfaces are dry, clean, and free of dust and grease.
- Avoid installing mirrors on wet or damp surfaces.
- The dowels included with the mirror are designed for stone walls and are not suitable for plasterboard. For plasterboard, we recommend using, for example, an Alligator 6mm dowel.

### Sensor switch operation

- If this model has a sensor switch, touch it (the button has a touch sensor). The LED lights will turn on.
- If you chose a mirror with adjustable lights, a long press adjusts the brightness of the lights.
- One touch turns off the lights.

## MOUNTING PLATE INSTALLATION

1. Place the mirror face down on a flat surface, avoiding scratches.
2. Clean the back of the mirror with a silicone-free glass cleaner. (Figure 1)
3. Remove the protective film from the mounting plate and place it on the upper back side of the mirror. (Figure 2)
4. Press firmly on the mounting plate for at least 10 seconds, and then allow the mounting plate to adhere to the mirror for 30 minutes. Then, press firmly on the mounting plate again for at least 10 seconds.
5. Drill a hole in the wall for the dowel, taking into account the location of the mounting plate. Then install the dowel in the wall and screw the L-hook included in the mirror kit into it.
6. Remove the protective films from the mounting pads included in the mirror kit.
7. Hang the mirror with the mounting plate on the L-hook mounted on the wall and push the mirror to the wall with the mounting pads. (Figure 3)



## JUNCTION BOX INSTALLATION

1. Fix the mains cable in place with the fixing bracket and two screws so as to stop it from falling out of the junction box housing.
2. Connect the cables to the terminal block as guided by the box label.
3. Close the box with the lid using the four screws which have been provided.
4. Remove the protective film from the double-sided tape on the junction box and attach the junction box to the inside of the mirror.

### Guide for the use and maintenance of LED mirror

- Use a soft microfiber cloth or a soft cloth to clean the mirror. Avoid rough or scratchy materials that may damage the surface of the mirror.
- Use a special glass cleaner to remove dust, stains, and grease from the surface of the mirror. Do not use aggressive chemicals that can damage the surface of the mirror.
- Clean the surface of the mirror gently in a circular motion to avoid scratches or streaks.
- Regular and gentle cleaning helps maintain the mirror's cleanliness and shine and extends its service life.